

Permanent Strainers

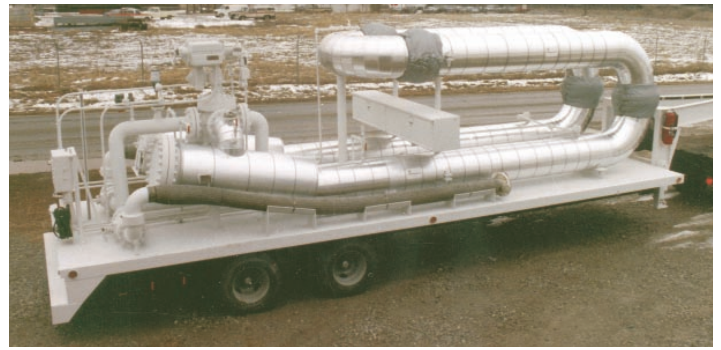
Temporary Strainers

Coupon Holders

Line Blinds

Sampling Equipment

Pipeline Accessories



WEAMCO
METRIC

*Portable and Volumetric
Meter Provers*

Metering Systems

Lact Units

Custom Fabrication

Toll Free • 800-331-3790

Oklahoma Home Office • 918-445-1141

Fax • 918-445-4617

www.weamco.com

**Mag-Tek™ Sphere
Detector Switches**

Portable & Volumetric Provers



Portable & Volumetric Pipe Provers

WeamcoMetric established itself over 35 years ago as one of the leaders in Portable Pipe & Volumetric Meter Prover design, engineering and manufacturing. Bi-Directional Pipe Provers have always been the Prover of choice in most portable Prover applications. Its exceptional track record in the areas of reliability and maintenance, while remaining one of the least expensive, makes it a natural choice for portable Prover applications. WeamcoMetric has manufactured portable Provers for companies and applications through out the world. Whether you want it trailer, truck or yard wagon mounted, WeamcoMetric has the experience and expertise to manufacture high quality user-friendly portable Prover designs.

Although Volumetric Meter Provers are specialty use provers for the loading rack market, WeamcoMetric's past experience encompasses a vast array of styles and designs of this type of Prover. If you have an application that would best be suited with a Volumetric Prover you will not find a better source for your needs.

With WeamcoMetric you will be working with one of the most professional staffs and highly skilled manufacturing forces in the business. This assures that your projects will run smoothly and on schedule. Our people will do everything within their power to accommodate the needs and desires of our customers.

(For more information concerning this and other types of Provers, please see our Conventional Liquid Meter Prover Design and Construction Section in this catalog.)

**WEAMCO
METRIC**
(918) 445-1141
(800) 331-3790
Fax: (918) 445-4617
www.weamco.com

Prover Refurbishment



In today's business world the economics of what we do and how we do it, are being scrutinized more than ever before. At no other time has it been more important to control our spending than the present. Experience and common sense tells us that being frugal with our assets makes the all-important bottom line look much better. At WeamcoMetric we are no different and we recognize the importance of saving our customers money. One of the many areas we are continually able to do this, is in our Prover Refurbishment services. For years WeamcoMetric has been a leader in the ability to take used Pipe Meter Provers and refurbish them to like-new condition at a fraction of the cost of a new Prover. In many cases with updated technology the refurbished Prover is better than the original. Whether it is Bi-Directional, Uni-Directional, Volumetric, Portable or stationary, WeamcoMetric can refurbish your Prover. Refurbishment can be done to your desired specifications, or we would gladly review your current service requirements along with your existing Prover and make a recommendation on what we feel would best meet your needs, while staying within your budget. Whatever your situation, you can rest assured that with over 35 years experience in manufacturing and rebuilding Pipe Meter Provers, WeamcoMetric has a solution for you. We look forward to working with you.

**WEAMCO
METRIC**
(918) 445-1141
(800) 331-3790
Fax: (918) 445-4617
www.weamco.com

Typical Prover Specifications

VOLUMETRIC PROVERS

Design and Construction:

API Manual of Petroleum Measurement Standards, Chapter 4 Proving Systems, Section 4, NIST Handbook 105-3

Hydrotest:

Static water pressure

Materials:

Pipe - ASTM A-106/53-Gr B Seamless

Plate: ASTM A-36

Flanges and threaded fittings -
ASTM A-105

Weld fittings - ASTM A-234 WPB

Heads: ASTM A-516-Gr-70

Studs - ASTM A-193-B7

Nuts - ASTM A-194-2H

Gaskets - Spiralwound, 304SS

O-Rings - Viton

Trim:

Scales; brass, graduations engraved per specification, filled with black lines for high visibility.

Gauge glass sets; Penderty N5A with protection rods, 5/8" diameter glass.

Thermometer; mercury in glass with 0.20°F divisions and SS thermowell.

PROVER RE-WORK AND REFURBISHMENT

Typical items we can offer:

Disassembly and inspection to evaluate extent of work to be performed prior to work commencement.

Sandblast out old coating to white metal and 5 to 7 mils Flexkote 707 air dried epoxy or Phenoxy 109 baked on phenolic.

Re-work 4-way valve with soft goods kits, slips, re-chrome body and plug if required.

New electric actuators.

Lengthen pre-run to increase flow rate.

Lengthen calibrated section for meter changes.

Internal grinding or repairs of prover pipe.

All new seats and o-rings.

New sphere stops or ramps.

New Mag-Tek switches.

New sphere; inflatable polyurethane, nitrile, or neoprene with accessories (pump and sizing ring).

External sandblasting and painting.

Re-calibration; water draw method, repeatability within 0.02 percent per API Chapter 4, Chapter 11.2.3 and Chapter 12, Section 2.

All materials and equipment selected for WeamcoMetric provers are of the highest quality and consistency. Selection is based on proven industry standards. We accept no substitute.

P.O. Box 9555 • Tulsa, OK 74157-0555

Phone: (918) 445-1141 • Toll Free: (800) 331-3790

Fax: (918) 445-4617 • www.weamco.com



Bulletin PVP303